



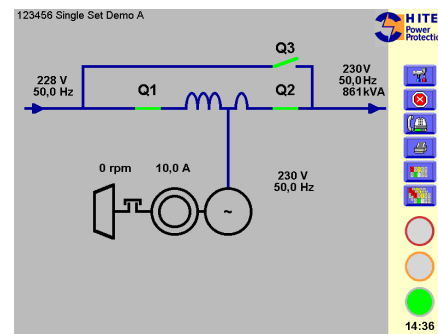
Remote monitoring tool (QMS)

Prevention and early warning system

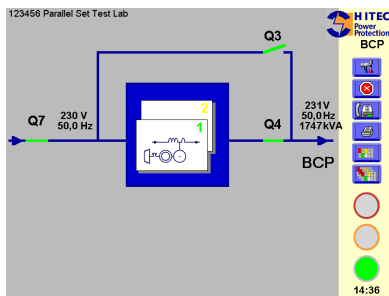
Hitec Power Protection offers a powerful software tool (QMS) for the monitoring, supervision and maintenance support of our dynamic UPS/CPS systems. This multi-purpose program, PC controlled under Windows, gathers, stores, analyzes and easily displays information on the status of the system, events history and electrical parameters. The data is conveniently arranged for easy reading on a PC screen and printing. The QMS tool enables easy monitoring the condition of the UPS/CPS systems, both on site (via laptop, PC, network) and remote (via modem or internet access). QMS also gives our 24/7 helpdesk and service team the possibility to check the status of your system and give support fast and in an efficient way if needed.

Detailed and actual information

The QMS tool provides detailed information on the UPS/CPS system to make supervision easier. All readings and data, such as operating hours, number of diesel starts and diesel running time, are shown in an easy and readable format. Furthermore, information on the components and configuration of the system are accessible. The software tool not only provides the user with up to date information, but also an overview on changes of state and errors over the last three months is available. In the case of a warning or status change regarding the UPS/CPS system, the software indicates all involved components or modules to help and find the right solution. The QMS tool therefore improves the availability of the UPS/CPS system.



Main screen for a single line unit



Main screen for parallel system

Easy use and access

Self-explanatory pictograms guide you through the screens and detailed information on the UPS/CVPS system without requiring a detailed knowledge of the system. English or Dutch texts are available as standard, others languages can be provided as an option.

Advantages

Information on the UPS/CPS system is available worldwide, wherever and whenever needed. The QMS tool also aids in decision-making and preventive maintenance. By showing events history, warnings and alarms it helps both user and service engineer.

Installation

The QMS monitoring software is available on Hitec Power Protection UPS/CPS systems using a Quantum PLC controls. The software communicates with the UPS/CPS system via a direct RS232 link or via telephone lines using modems. A PC with Windows 98 or higher, at least 16Mb for speed and 15 Mb free space on the hard disk prior to installation is needed. In addition a color screen with 1Mb SVGA-card (800x600, 256 colors) and a modem are needed. We provide you with the required software and a user manual.

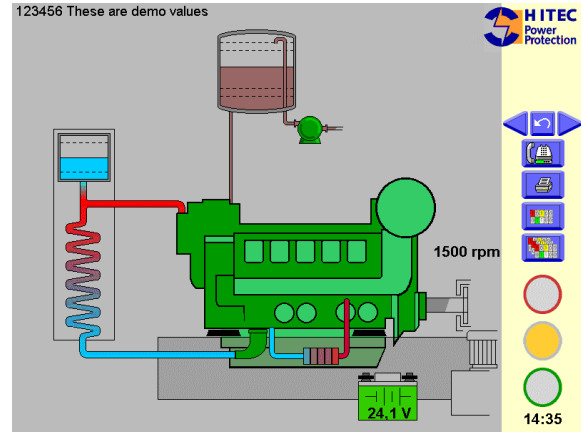
Option

The PC can be built into the UPS/CPS system with an LCD touch screen mounted in the cabinet door.

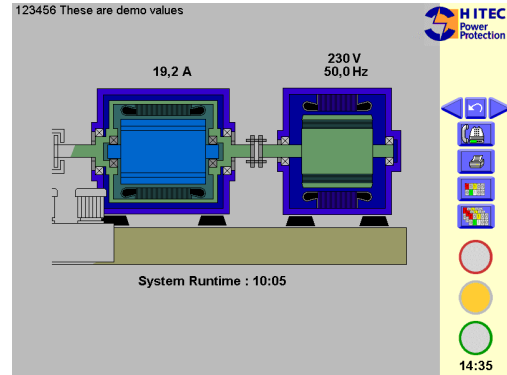
Hitec Power Protection by
P.O. Box 65
7600 AB Almelo
The Netherlands
Phone: +31 546 589 589
Fax: +31 546 589 489
E-mail: info@hitec-ups.com
www.hitec-ups.com

Parameters QMS tool

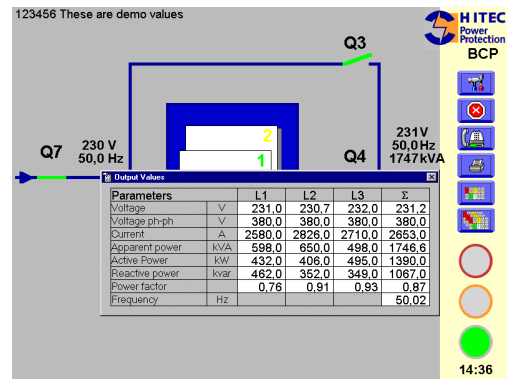
- Output voltage
- Output current
- Mains voltage
- Generator voltage
- Apparent power
- Active power
- Reactive power
- Input frequency
- Generator frequency
- Induction coupling AC current
- Diesel engine speed
- Battery voltage



Diesel engine



Generator/Induction coupling



AC monitor